

**We have
missed you!!!**



Procedures for Questions and Answers

- **Please let us get through our presentation.**
- **Please write down any questions you have. We will open the chat after the presentation. You will then be able to type your question in the chat as time allows.**
- **We will monitor the chat and answer your questions as they arise**

Topics to be covered.....

- **Designating and timeline for A/B group**
- **Siblings a/b group**
- **Layout of classrooms**
- **Before and aftercare**
- **PPE for Staff and Students**
- **Switching classes**

Topics to be covered.....

- **Lunch/Recess**
- **Related Arts**
- **Teacher vaccinations**
- **Instructional Model**
- **Contact tracing/protocols for testing positive**
- **Transportation social distancing**

The world is moved along, not only by the mighty shoves of its heroes, but also

by the aggregate of the tiny pushes

of each honest worker.

Helen Keller

**Access to the FAQ document
(check for updates)**

Elkridge Elementary FAQ

Our Priorities:

Safety

Academic Excellence

Building

Community

**Adaptive Thinking
& Flexibility**

What Will Not Change:

Values-

Quality Relationships

Compassion

Well being of Self &

Others

EES Spirit

Front Office

Schedules

Small
Groups

Instructional
Model

Transportation

Visitor
Rules

What Changes Can We Expect to/in the Building?

Safety
Protocols

Bathroom
Procedures

Staffing-room
monitors

Traffic Patterns

Cafeteria

Cleaning
Procedures

Room
Arrangements

Related Arts

Drinking
Water

Room Usage

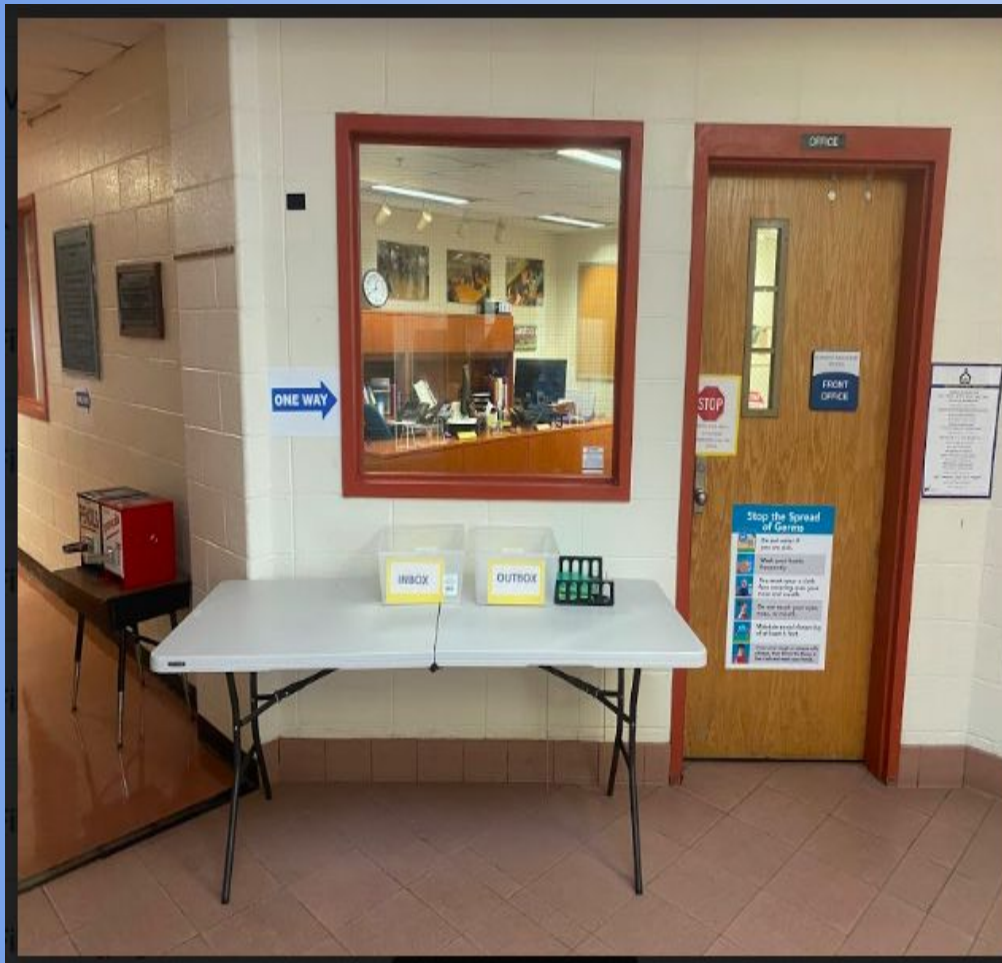
Recess

Health Room

**Come on, I'll
show you!**



The front office



**I see changes
already!!!**

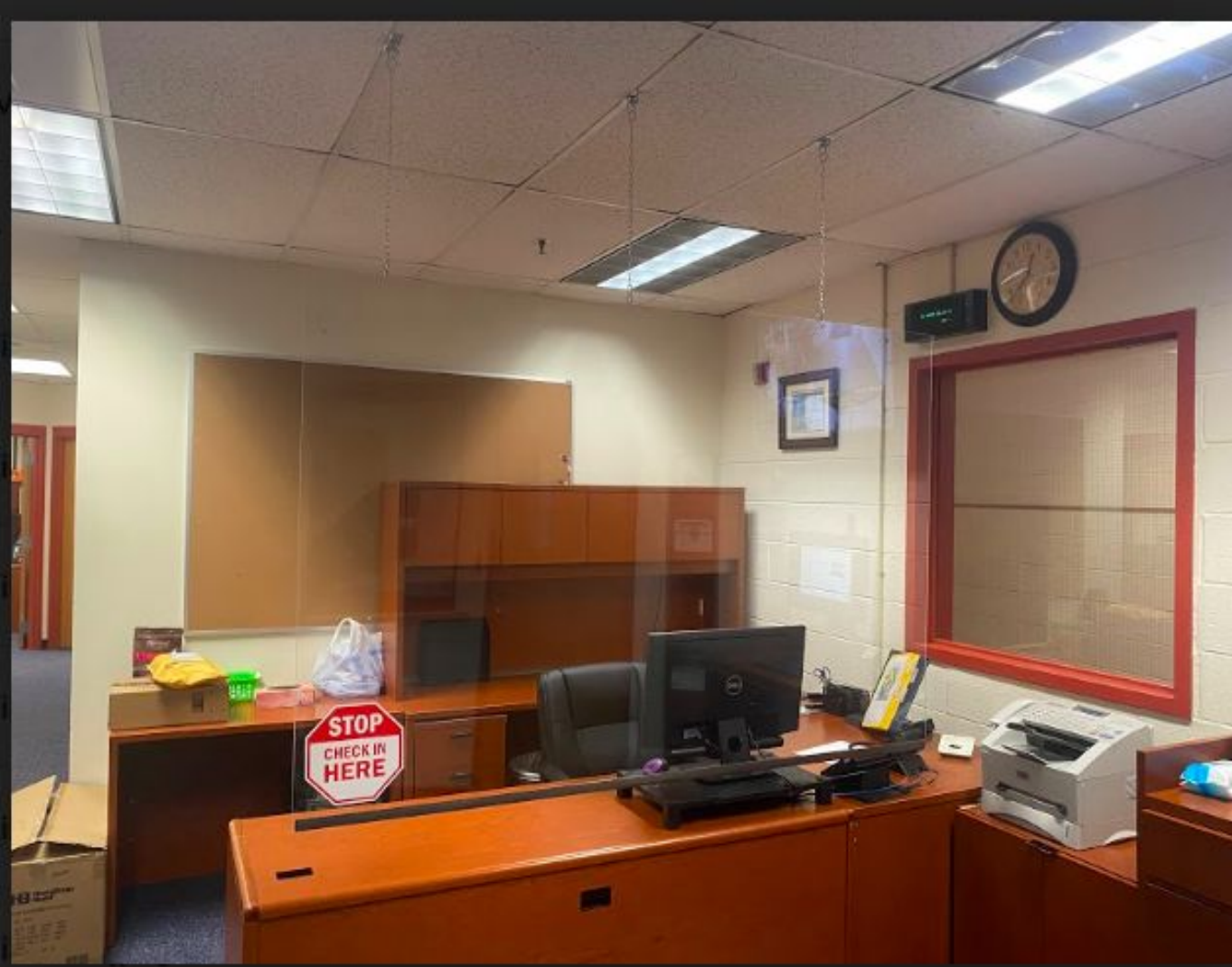


PPE Staff

- 2 face masks
- Gloves
- Gowns for specialized staff as needed
- Plexi glass in certain instructional areas

PPE Students

- 3 ply face mask- sized for students
- Disposable face masks if needed



**Can you see the
glass shield??**





**I wonder where
the art work is
behind Ms.
Jenny's desk??**





LET'S EAT

Desks will be numbered. We will clean in between shifts. If possible, we will rotate by shift.





Media Center

**Flex space:
small groups,
team planning
etc.**



First Grade Classroom





Fifth Grade Classroom

Notice...The chairs are 6 feet apart, not the desk edges!



Stop the Spread of Germs



Do not enter if you are sick.



Wash your hands frequently.



You must wear a cloth face covering over your nose and mouth.



Do not touch your eyes, nose, or mouth.



6ft

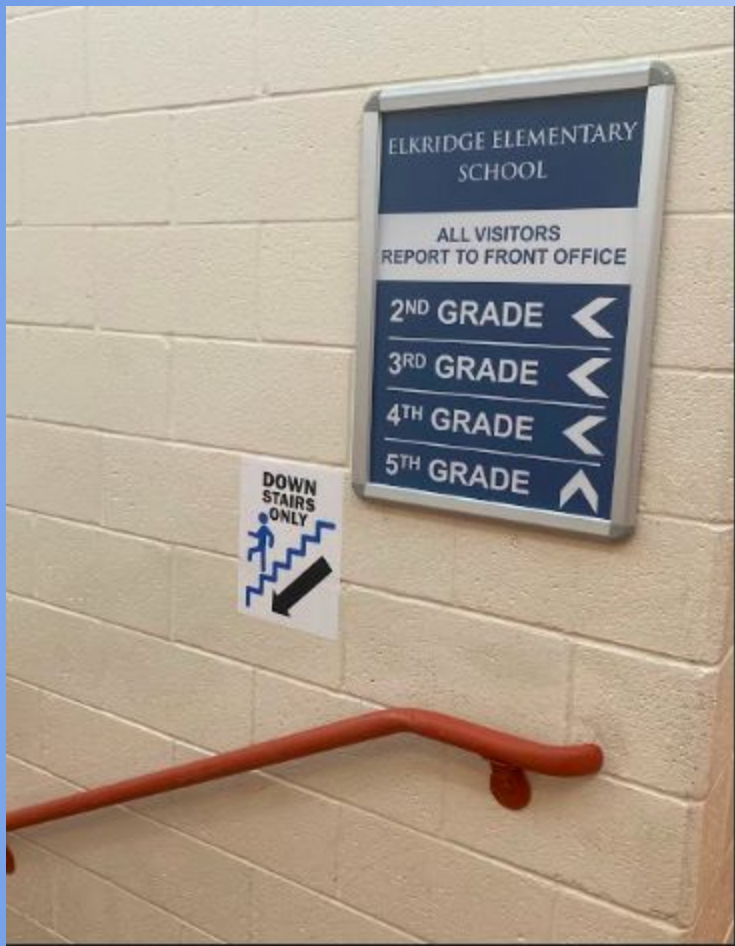
Maintain social distancing of at least 6 feet.



Cover your cough or sneeze with a tissue, then throw the tissue in the trash and wash your hands.

I promise to do my part for you. Help keep Elkster healthy!!





I used to be able to go both ways on the steps. I don't mind walking a little further!





**I will use sanitizer and
wash my hands
frequently! Will you??**



Complete Family File BEFORE Returning to School using HCPSS Connect Account

Contact:

Jennifer_eley-whitebloom@hcpss.org

Jennifer_smallidge@hcpss.org

[How To Complete Learning Survey Video](#)

[Parent Sign Up Sheet](#)

[PTA-EES Amazon Wish list](#)

What Can Families Do To Support This Process?



**ANY
QUESTIONS?**

